

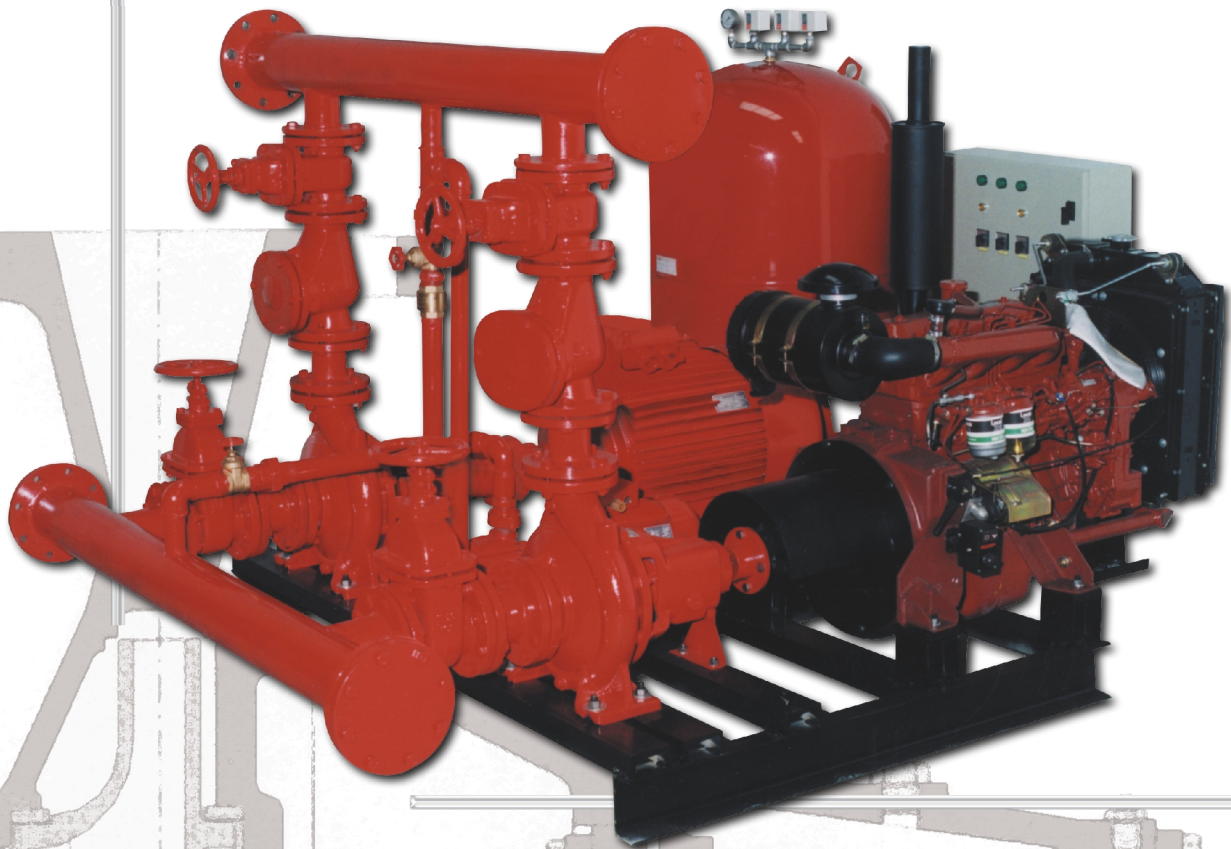


S. AIVAZIDIS S.A.

www.aivazidis.gr



FIRE FIGHTING BOOSTING SETS



TECHNICAL DESCRIPTION

OF FIRE FIGHTING BOOSTING SETS TYPE EDJ-EEJ

The fire fighting boosting sets of S.AIVAZIDIS S.A. company (ISO 9001 certified) are manufactured with the most modern and studied design providing high quality and effective solutions of fire extinguishing, in strict compliance with the requirements both of National Fire Service Dept. and the regulations (under request) NFPA-20 of USA or European Standard EN 12845+A2. They are able to be installed in public buildings, hotels, hospitals, theaters, cinemas, ships, factories, forest lands, etc for protection against fire. The materials used for its manufacture are made of optimum quality, selected after strict control inspection, closely following the predetermined production processes such as those analytical described in the manual quality assurance according ISO9001. All the manufactured fire fighting boosting sets of our company are CE certified.

The fire fighting boosting sets consisted of the following basic equipment:

TYPE EDJ / SERIES 32-40-50-65-80-100
Includes : electric driven pump / diesel driven pump / jockey pump)

- Electric driven pump set

Pump

Centrifugal single stage or multistage pump of S. AIVAZIDIS S.A. company, is horizontal (type “S”) or vertical version. The centrifugal pump is connected with the electric motor through strong elastic joint on a advanced base frame being a sturdy group totally straight and balanced without vibrations, noiseless operation, suitable for “on the spot” assembly-disassembly service. The body and the impeller are manufactured from cast iron GG25 according to DIN 24255 and the shaft from stainless steel AISI420 (under request we can supply pumps with different materials such as bronze or stainless steel). The shaft abuts on two (2) close type ball bearings set located into the body of the pump. The sealing is achieved through packing ring or mechanical seal (under request).

Electric motor

The electric motor of S.AIVAZIDIS S.A. company type “SIGMA”, is asynchronous, three phase, B3 according to DIN42673-42677-42769, VDE 0530 and IEC72-1,2. It is externally air-ventilated, protection degree IP54 according to DIN40050 and IEC publ. 34-5/1968 and protection degree IP65 for the terminal box, insulation class F according to VDE 0530 and dimensions according to DIN42673. The electric motors abut on suitable ball bearings of life time 20.000-30.000 hours. The rotor of the electric motor are balanced dynamically to the nominal rotation speed and then are rotated 20% more according to the VDE 0530 so as the vibrations of the electric motors to be much lower from the limits specified in the DIN 45665 during their operation.

- Diesel driven pump set

Pump

Centrifugal single stage or multistage pump of S. AIVAZIDIS S.A. company, is horizontal (type “S”) or vertical version. The centrifugal pump is connected with the electric motor through strong elastic joint on a advanced base frame being a sturdy group totally straight and balanced without vibrations, noiseless operation, suitable for “on the spot” assembly-disassembly service. The body and the impeller are manufactured from cast iron GG25 according to DIN 24255 and the shaft from stainless steel AISI420 (under request we can supply pumps with different materials such as bronze or stainless steel). The shaft abuts on two (2) close type ball bearings set located into the body of the pump. The sealing is achieved through packing ring or mechanical seal (under request).

Diesel engine

The diesel engine is water or air-cooled, four stroke, rated power greater than 20% from pump absorbed power and it is suitable for continuous operation at +1000m and indoor installation with up to 45 °C ambient temperature. The overload ability is 10% for one (1) hour in twelve (12) hours operation (DIN6270).

Also includes: Automatic mechanical governor - direct fuel injection system - starter 12V or 24V DC - dynamo - electromagnetic fuel valve - exhaust pipe - batteries - fuel tank.

- Electric driven pump set (jockey)

Pump

Centrifugal multistage or single stage pump, horizontal or vertical, self – priming or simple one. The jockey centrifugal pump is connected with the electric motor through strong elastic joint on an advance base frame being a sturdy group totally straight and balanced without vibrations and noiseless operation, suitable for “on the spot” assembly-disassembly service. The body is manufactured from stainless steel or cast iron GG25 according to DIN 24255, shaft from stainless steel AISI420 (under request we can supply pumps with different body material such as bronze or different impeller material such as NORYL). The sealing is achieved though packing ring or mechanical seal (under request).

Electric motor

The electric motor of S.AIVAZIDIS S.A. company type “SIGMA”, is asynchronous, three phase, B3 according to DIN42673-42677-42769, VDE 0530 and IEC72-1,2. It is externally air-ventilated, protection degree IP54 according to DIN40050 and IEC publ. 34-5/1968 and protection degree IP65 for the terminal box, insulation class F according to VDE 0530 and dimensions according to DIN42673. The electric motors abut on suitable ball bearings of life time 20.000-30.000 hours. The rotor of the electric motor are balanced dynamically to the nominal rotation speed and then are rotated 20% more according to the VDE 0530 so as the vibrations of the electric motors to be much lower from the limits specified in the DIN 45665 during their operation.

- Control panel

The control and operation electric panel of fire fighting boosting set, assures the automatic or manual operation of the set. It is sealed with protection degree IP54, manufactured from DKP iron with anti-rust and anti-corrosion painting. It carries Y/Δ contactors for the start of the main electric motor, direct on line contactor for the start of the jockey electric motor, manual – auto selection switch, thermal contactors, switches, fuses, indication lamps and auxiliary equipment which assures the automatic operation and protection of the boosting set.

OPERATION:

A) Manual operation: Each pump starts and stops no matter the system pressure in case we set the optional switch in “MANUAL” position.

B) Automatic operation: Three (3) pressure switches are used for the interruption of the pumps operation at their nominal pressure. Any water leakages are compensated from the expansion vessel, whereas the jockey pump compensates greater water leakages, then the electric driven and last the diesel driven pump is also activated though its electric start system. Diesel engine start failure is indicated by audio-visual signal. Also the panel carries battery charger so as the batteries to be always ready to be used. It carries also protection of the pumps against lack of water.

- Expansion vessel

Expansion vessels of capacity from 200lt up to 1000lt are manufactured from special mixed metal of European origin which is not getting rusted. The vessel is separated with BUTYL membrane in two spaces. The above space is filled with air of suitable pressure and the below space is filled with water of the fire fighting system. The membrane is suitable for slightly drain water and can operate clearly up to 16atm working pressure. Expansion vessel equipped with air compressor (without membrane) is manufactured for working pressures greater than 15atm without regard to capacity.

- Hydraulic equipment

The collectors are manufactured from TUBO tubes with no welding. All the hydraulic equipment such as, gate valves, check valves, flanged systolic fittings according to ASA, as well as bronze gate valves and check valves for the jockey, are carefully and strictly selected for long time operation and high quality construction.

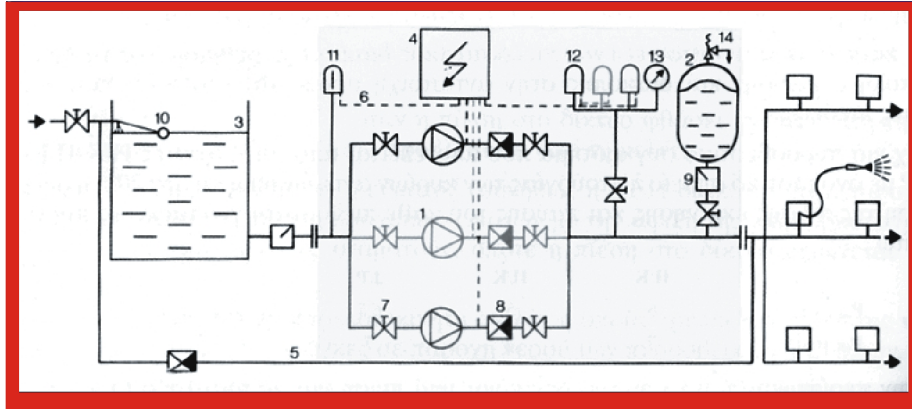
TYPE EEJ / SERIES 32-40-50-65-80-100.

Includes : two (2) units of electric driven pump / jockey pump

The technical description is similar to the mentioned one, except the diesel motor which is replaced by electric motor.

Each fire fighting boosting set is tested and calibrated in our facilities before its delivery.

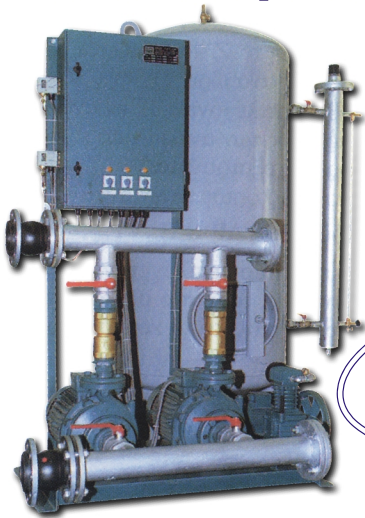
PRINCIPAL OPERATION DIAGRAM



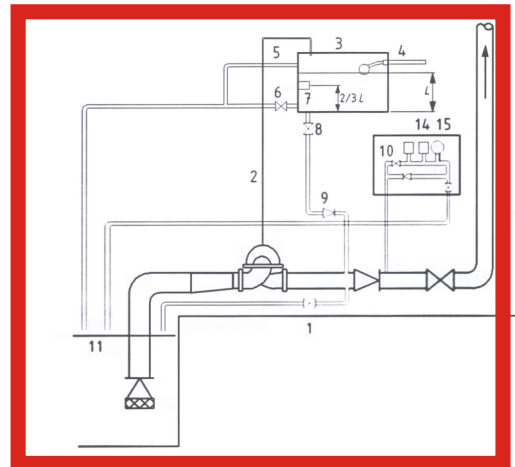
- | | | | | |
|---------------------|-------------------|-----------------------|---------------------------|---------------------------|
| 1. PUMP | 4. ELECTRIC PANEL | 7. SUCTION GATE VALVE | 10. FLOATING VALVE | 13. PRESSURE GAUGE |
| 2. EXPANSION VESSEL | 5. PIPES | 8. CHECK VALVE | 11. DRY PROTECTION SENSOR | 14. PRESSURE RELIEF VALVE |
| 3. SUCTION TANK | 6. WIRING | 9. FILTER | 12. PRESSURE SWITCH | |

Fire fighting system with air compressor

Operation diagram according European Standard EN 12845+A2



**FLOW: 10-400m³/h
TOTAL HEAD: > 100 m**



Fire fighting system according to American standard NFPA - 20

Vertical turbine pumps

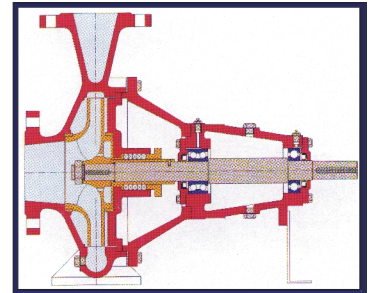
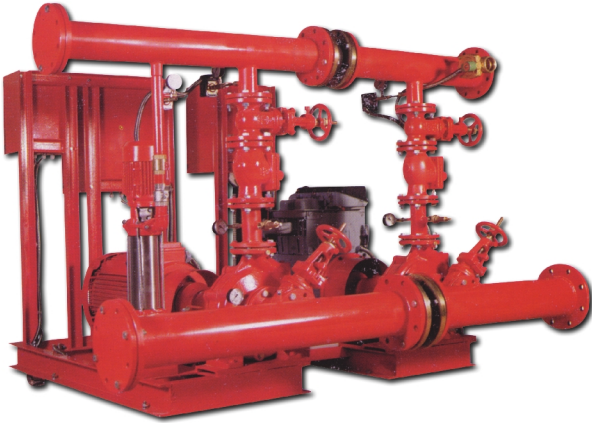
**FLOW: 10-800m³/h
TOTAL HEAD: > 20 m**



Fire fighting system according to American standard NFPA - 20

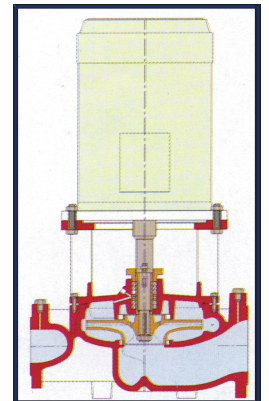
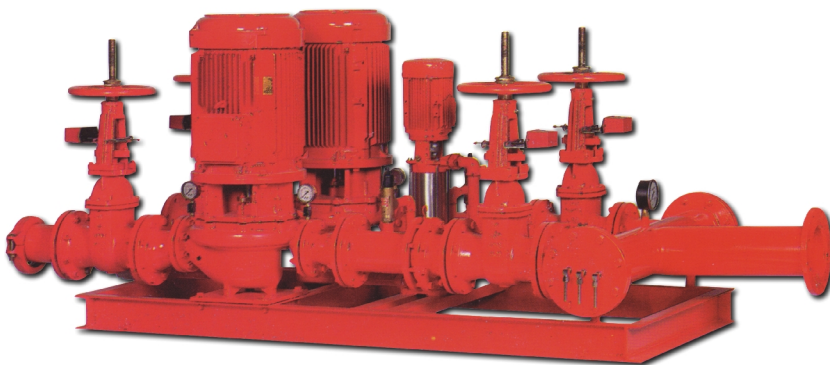
END SUCTION pumps

**FLOW: 10-400m³/h
TOTAL HEAD: 15-110m**



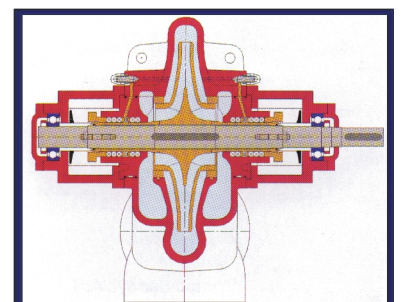
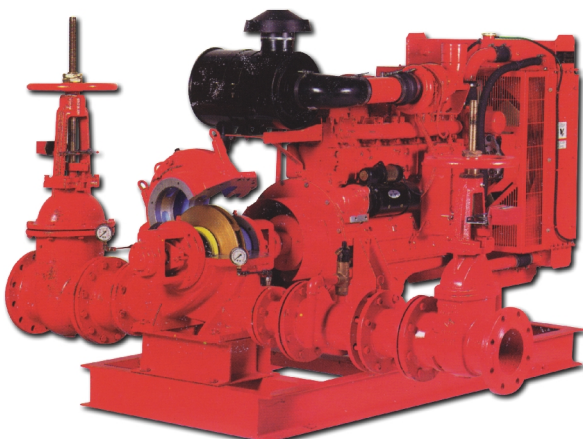
IN - LINE pumps

**FLOW: 80-550m³/h
TOTAL HEAD: 55-185m**



SPLIT CASE pumps

**FLOW: 25-200m³/h
TOTAL HEAD: 30-110m**



FIRE FIGHTING BOOSTING SETS SELECTION BOARD

FIRE FIGHTING BOOSTING SETS, 32 SERIES ELECTRIC DRIVEN PUMP - DIESEL ENGINE DRIVEN PUMP - JOCKEY PUMP

Model	Flow (m ³ /h)					Max. Motor power (HP)	Max diesel engine power (HP)	Max jockey motor power (HP)	Expansion vessel (lt)	Collector diameter suction/delivery (mm)	Min.outlet dimensions LxWxH (mm)
	15	20	25	30	35						
	Total head (m)										
EDJ 32-200 (Φ207)	56	53	49	43	-	10	14	200	80/65	1570*1500*1600	
EDJ 32-200 (Φ218)	70	67	63	59	52	15	17	200	80/65	1600*1580*1600	

FIRE FIGHTING BOOSTING SETS, 32 SERIES ELECTRIC DRIVEN PUMP - DIESEL ENGINE DRIVEN PUMP - JOCKEY PUMP

Model	Flow (m ³ /h)										Max. Motor power (HP)	Max diesel engine power (HP)	Max jockey motor power (HP)	Expansion vessel (lt)	Collector diameter suction/delivery (mm)	Min.outlet dimensions LxWxH (mm)
	20	25	30	35	40	45	50	55	60							
	Total head (m)															
EDJ 40-200 (Φ178)	42	41	39	36	32	27	-	-	-	-	10	14	2	200	100/65	1570*1500*1600
EDJ 40-200 (Φ207)	-	58	56	55	52	46	42	35	26	-	15	17	3	200	100/65	1600*1580*1600
EDJ 40-200 (Φ218)	-	66	64	61	58	55	50	43	35	-	20	25	3	300	100/65	1790*1640*1600
EDJ 40-250 (Φ226)	-	66	65	62	58	53	38	-	-	-	20	25	3	300	100/65	1790*1640*1600
EDJ 40-250 (Φ246)	84	83	81	78	76	73	67	-	-	-	25	25	4	300	100/65	1790*1640*1600
EDJ 40-250 (Φ258)	101	100	98	97	94	90	84	80	-	-	30	33	4	300	100/65	1820*1690*1600
EDJ 40-250 (Φ268)	110	109	108	107	104	102	97	91	-	-	40	40	7.5	500	100/65	1900*1800*1600

- 1) The outlet dimensions are the minimum ones and are not including the expansion vessel and the electric panel.
- 2) Jockey motor power refers to the indicated flow of Q=3 m³/h.
- 3) The "bold" number area in the "FIRE FIGHTING BOOSTING SETS SELECTION BOARD" indicates high efficiency performance points.
- 4) The above mentioned "motor powers" in the "FIRE FIGHTING BOOSTING SETS SELECTION BOARD" are the optimum suitable motor power.
- 5) All above mentioned boosting set models are indicated. Under demand our company is able to supply big variety of different performance models.

FIRE FIGHTING BOOSTING SETS, 50 SERIES
ELECTRIC DRIVEN PUMP - DIESEL ENGINE DRIVEN PUMP - JOCKEY PUMP

Model	Flow (m ³ /h)												Max. Motor power (HP)	Max diesel engine power (HP)	Max jockey motor power (HP)	Expansion vessel (lt)	Collector diameter suction/delivery (mm)	Min.outlet dimensions LxWxH (mm)
	Total head (m)																	
	40	50	55	60	65	70	75	80	85	90	95	100						
EDJ 50-160 (Φ156)	30	29	27	26	24	23	21	19	17	-	-	-	10	14	2	200	100/80	1570*1500*1600
EDJ 50-160 (Φ174)	39	37	36	35	34	33	31	29	28	26	24	21	15	17	2	200	100/80	1600*1560*1600
EDJ 50-200 (Φ171)	34	30	29	27	25	22	20	-	-	-	-	-	10	14	2	200	100/80	1570*1500*1600
EDJ 50-200 (Φ188)	43	41	39	37	36	34	32	30	28	26	23	-	15	17	2	200	100/80	1600*1560*1600
EDJ 50-200 (Φ208)	53	51	50	49	47	45	43	41	39	37	34	-	20	25	2	300	100/80	1790*1620*1600
EDJ 50-200 (Φ218)	59	57	56	54	52	51	49	47	44	42	39	-	25	25	3	300	100/80	1790*1640*1600
EDJ 50-250 (Φ210)	64	62	60	59	57	54	52	48	44	-	-	-	30	33	3	300	100/80	1820*1690*1600
EDJ 50-250 (Φ228)	75	73	72	70	69	68	66	64	60	56	52	-	40	39	3	500	100/80	1900*1730*1600
EDJ 50-250 (Φ252)	95	93	92	90	89	87	85	82	79	76	72	68	50	49	4	500	100/80	1910*1730*1700
EDJ 50-250 (Φ268)	111	110	109	108	107	105	104	101	98	96	92	88	60	62	7.5	500	100/80	1930*1870*1700

FIRE FIGHTING BOOSTING SETS, 65 SERIES
ELECTRIC DRIVEN PUMP - DIESEL ENGINE DRIVEN PUMP - JOCKEY PUMP

Model	Flow (m ³ /h)												Max. Motor power (HP)	Max diesel engine power (HP)	Max jockey motor power (HP)	Expansion vessel (lt)	Collector diameter suction/delivery (mm)	Min.outlet dimensions LxWxH (mm)
	Total head (m)																	
	60	70	80	90	100	110	120	130	140	150	160	170						
EDJ 65-160 (Φ139)	25	24	23	21	19	17	14	-	-	-	-	-	10	14	1	200	125/100	1570*1500*1600
EDJ 65-160 (Φ157)	33	32	31	30	28	26	24	21	18	-	-	-	15	17	2	200	125/100	1600*1560*1600
EDJ 65-160 (Φ170)	41	40	39	38	36	35	33	30	28	25	-	-	20	25	2	300	125/100	1790*1620*1600
EDJ 65-160 (Φ174)	43	42	41	40	39	37	36	34	31	28	26	-	25	25	2	300	125/100	1790*1620*1600
EDJ 65-200 (Φ179)	45	44	42	40	38	35	32	28	-	-	-	-	25	25	2	300	125/100	1790*1620*1600
EDJ 65-200 (Φ193)	54	53	52	50	47	45	42	38	34	29	-	-	30	33	2	300	125/100	1820*1670*1600
EDJ 65-200 (Φ208)	63	62	61	60	58	56	54	52	48	45	40	36	40	39	3	500	125/100	1900*1730*1600
EDJ 65-200 (Φ218)	70	69	68	66	65	64	61	59	56	53	49	44	50	49	3	500	125/100	1910*1730*1700
EDJ 65-250 (Φ204)	54	52	50	46	42	36	-	-	-	-	-	-	30	33	2	500	125/100	1820*1670*1700
EDJ 65-250 (Φ220)	65	64	62	58	56	52	48	40	-	-	-	-	40	39	3	500	125/100	2010*1730*1700
EDJ 65-250 (Φ236)	78	76	75	72	70	66	62	57	51	43	-	-	50	49	3	500	125/100	2020*1730*1700
EDJ 65-250 (Φ252)	90	89	88	86	83	80	76	72	68	63	55	47	60	62	4	500	125/100	2040*1810*1700
EDJ 65-250 (Φ268)	104	102	101	100	98	96	92	90	86	80	75	68	75	83	4	500	125/100	2220*1930*1700

FIRE FIGHTING BOOSTING SETS , 80 SERIES ELECTRIC DRIVEN PUMP - DIESEL ENGINE DRIVEN PUMP - JOCKEY PUMP

Model	Flow (m ³ /h)												Max. Motor power (HP)	Max diesel engine power (HP)	Max jockey motor power (HP)	Expansion vessel (lt)	Collector diameter suction/delivery (mm)	Min.outlet dimensions LxWxH (mm)	
	Total head (m)																		
	60	80	100	120	140	160	180	200	220	240	260	280							300
EDJ 80-160 (Φ138)	18	17	15	13	10	-	-	-	-	-	-	-	-	10	14	1	200	150/125	1570*1480*1700
EDJ 80-160 (Φ144)	25	24	22	20	17	13	-	-	-	-	-	-	-	15	17	1	200	150/125	1600*1540*1700
EDJ 80-160 (Φ162)	-	31	29	28	25	23	19	-	-	-	-	-	-	20	25	2	300	150/125	1820*1620*1700
EDJ 80-160 (Φ169)	-	36	35	34	32	29	26	21	-	-	-	-	-	25	25	2	300	150/125	1820*1620*1700
EDJ 80-160 (Φ174)	-	39	38	37	36	34	31	27	20	-	-	-	-	30	33	2	300	150/125	1820*1670*1700
EDJ 80-200 (Φ183)	-	-	46	45	44	42	39	36	31	-	-	-	-	40	39	2	500	150/125	2040*1710*1700
EDJ 80-200 (Φ197)	-	-	55	54	53	51	49	46	42	35	-	-	-	50	49	3	500	150/125	2050*1730*1800
EDJ 80-200 (Φ207)	-	-	62	61	60	58	56	54	51	46	39	-	-	60	62	3	500	150/125	2070*1810*1800
EDJ 80-200 (Φ218)	-	-	-	68	67	66	64	63	59	54	48	-	-	75	83	3	500	150/125	2250*1930*1800
EDJ 80-250 (Φ218)	-	-	-	64	61	58	56	50	44	32	-	-	-	60	62	3	500	150/125	2070*1810*1800
EDJ 80-250 (Φ229)	-	-	-	71	69	67	64	60	56	51	41	-	-	75	83	3	500	150/125	2250*1930*1800
EDJ 80-250 (Φ250)	-	-	-	88	87	86	83	80	76	72	66	58	50	100	112	4	500	150/125	2390*1970*1900
EDJ 80-250 (Φ268)	-	-	-	102	100	99	98	95	92	88	84	76	70	125	131	4	500	150/125	2440*1990*1900

FIRE FIGHTING BOOSTING SETS , 100 SERIES ELECTRIC DRIVEN PUMP - DIESEL ENGINE DRIVEN PUMP - JOCKEY PUMP

Model	Flow (m ³ /h)												Max. Motor power (HP)	Max diesel engine power (HP)	Max jockey motor power (HP)	Expansion vessel (lt)	Collector diameter suction/delivery (mm)	Min.outlet dimensions LxWxH (mm)	
	Total head (m)																		
	140	160	180	200	220	240	260	280	300	320	340	360							380
EDJ 100-200 (Φ178)	41	39	38	36	34	32	30	27	-	-	-	-	-	40	39	2	500	200/150	2040*1690*1700
EDJ 100-200 (Φ190)	48	47	46	44	42	40	38	35	33	29	-	-	-	50	49	2	500	200/150	2050*1710*1800
EDJ 100-200 (Φ198)	-	52	51	50	48	46	44	42	39	36	33	30	-	60	62	2	500	200/150	2070*1790*1800
EDJ 100-200 (Φ209)	-	59	58	57	56	54	52	51	48	46	43	39	34	75	83	3	500	200/150	2250*1930*1900
EDJ 100-200 (Φ218)	-	65	64	63	62	61	59	58	56	54	51	48	44	100	112	3	500	200/150	2390*1970*1900
EDJ 100-250 (Φ213)	-	59	57	56	55	53	51	50	47	44	41	38	34	75	83	3	500	200/150	2260*1930*1900
EDJ 100-250 (Φ232)	-	-	68	67	66	65	63	62	61	58	56	53	50	100	112	3	500	200/150	2390*1970*2000
EDJ 100-250 (Φ250)	-	-	81	80	79	78	77	76	75	73	71	68	66	125	131	4	500	200/150	2440*1990*2000

**FIRE FIGHTING BOOSTING SETS , 32 SERIES
ELECTRIC DRIVEN PUMP (TWO UNITS)- JOCKEY PUMP**

Model	Flow (m ³ /h)					Max. Motor power (HP)	Max. jockey motor power (HP)	Expansion vessel (lt)	Collector diameter suction/delivery (mm)	Min.outlet dimensions LxWxH (mm)
	15	20	25	30	35					
	Total head (m)									
EEJ 32-200 (Φ207)	56	53	49	43	-	10	2	200	80/65	1580*1390*1500
EEJ 32-200 (Φ218)	70	67	63	59	52	15	3	200	80/65	1680*1530*1500

**FIRE FIGHTING BOOSTING SETS , 40 SERIES
ELECTRIC DRIVEN PUMP (TWO UNITS)- JOCKEY PUMP**

Model	Flow (m ³ /h)											Max. Motor power (HP)	Max. jockey motor power (HP)	Expansion vessel (lt)	Collector diameter suction/delivery (mm)	Min.outlet dimensions LxWxH (mm)
	20	25	30	35	40	45	50	55	60	Total head (m)						
EEJ 40-200 (Φ178)	42	41	39	36	32	27	-	-	-	-	-	10	2	200	100/65	1600*1390*1500
EEJ 40-200 (Φ207)	-	58	56	55	52	46	42	35	26	35	26	15	3	200	100/65	1700*1530*1500
EEJ 40-200 (Φ218)	-	66	64	61	58	55	50	43	35	35	35	20	3	300	100/65	1700*1530*1500
EEJ 40-250 (Φ226)	-	66	65	62	58	53	38	-	-	-	-	20	3	300	100/65	1750*1530*1500
EEJ 40-250 (Φ246)	84	83	81	78	76	73	67	-	-	-	-	25	4	300	100/65	1700*1530*1500
EEJ 40-250 (Φ258)	101	100	98	97	94	90	84	80	-	-	-	30	4	300	100/65	1770*1630*1500
EEJ 40-250 (Φ268)	110	109	108	107	104	102	97	91	-	-	-	40	7,5	500	100/65	1860*1780*1500

- 1) The outlet dimensions are the minimum ones and are not including the expansion vessel and the electric panel.
- 2) Jockey motor power refers to the indicated flow of Q=3 m³/h.
- 3) The “bold” number area in the “FIRE FIGHTING BOOSTING SETS SELECTION BOARD” indicates high efficiency performance points.
- 4) The above mentioned “motor powers” in the “FIRE FIGHTING BOOSTING SETS SELECTION BOARD” are the optimum suitable motor power.
- 5) All above mentioned boosting set models are indicated. Under demand our company is able to supply big variety of different performance models.

**FIRE FIGHTING BOOSTING SETS, 50 SERIES
ELECTRIC DRIVEN PUMP (TWO UNITS)- JOCKEY PUMP**

Model	Flow (m ³ /h)										Max. Motor power (HP)	Max jockey motor power (HP)	Expansion vessel (lt)	Collector diameter suction/delivery (mm)	Min.outlet dimensions LxWxH (mm)		
	40	50	55	60	65	70	75	80	85	90						95	100
	Total head (m)																
EEJ 50-160 (Φ156)	30	29	27	26	24	23	21	19	17	-	-	-	200	100/80	1600*1390*1500		
EEJ 50-160 (Φ174)	39	37	36	35	34	33	31	29	28	26	24	21	200	100/80	1700*1510*1500		
EEJ 50-200 (Φ171)	34	30	29	27	25	22	20	-	-	-	-	-	200	100/80	1600*1390*1500		
EEJ 50-200 (Φ188)	43	41	39	37	36	34	32	30	28	26	23	-	200	100/80	1700*1510*1500		
EEJ 50-200 (Φ208)	53	51	50	49	47	45	43	41	39	37	34	-	300	100/80	1700*1510*1500		
EEJ 50-200 (Φ218)	59	57	56	54	52	51	49	47	44	42	39	-	300	100/80	1750*1530*1500		
EEJ 50-250 (Φ210)	64	62	60	59	57	54	52	48	44	-	-	-	300	100/80	1770*1630*1500		
EEJ 50-250 (Φ228)	75	73	72	70	69	68	66	64	60	56	52	-	500	100/80	1860*1710*1500		
EEJ 50-250 (Φ252)	95	93	92	90	89	87	85	82	79	76	72	68	500	100/80	1860*1710*1600		
EEJ 50-250 (Φ268)	111	110	109	108	107	105	104	101	98	96	92	88	500	100/80	1920*1860*1600		

**FIRE FIGHTING BOOSTING SETS, 65 SERIES
ELECTRIC DRIVEN PUMP (TWO UNITS)- JOCKEY PUMP**

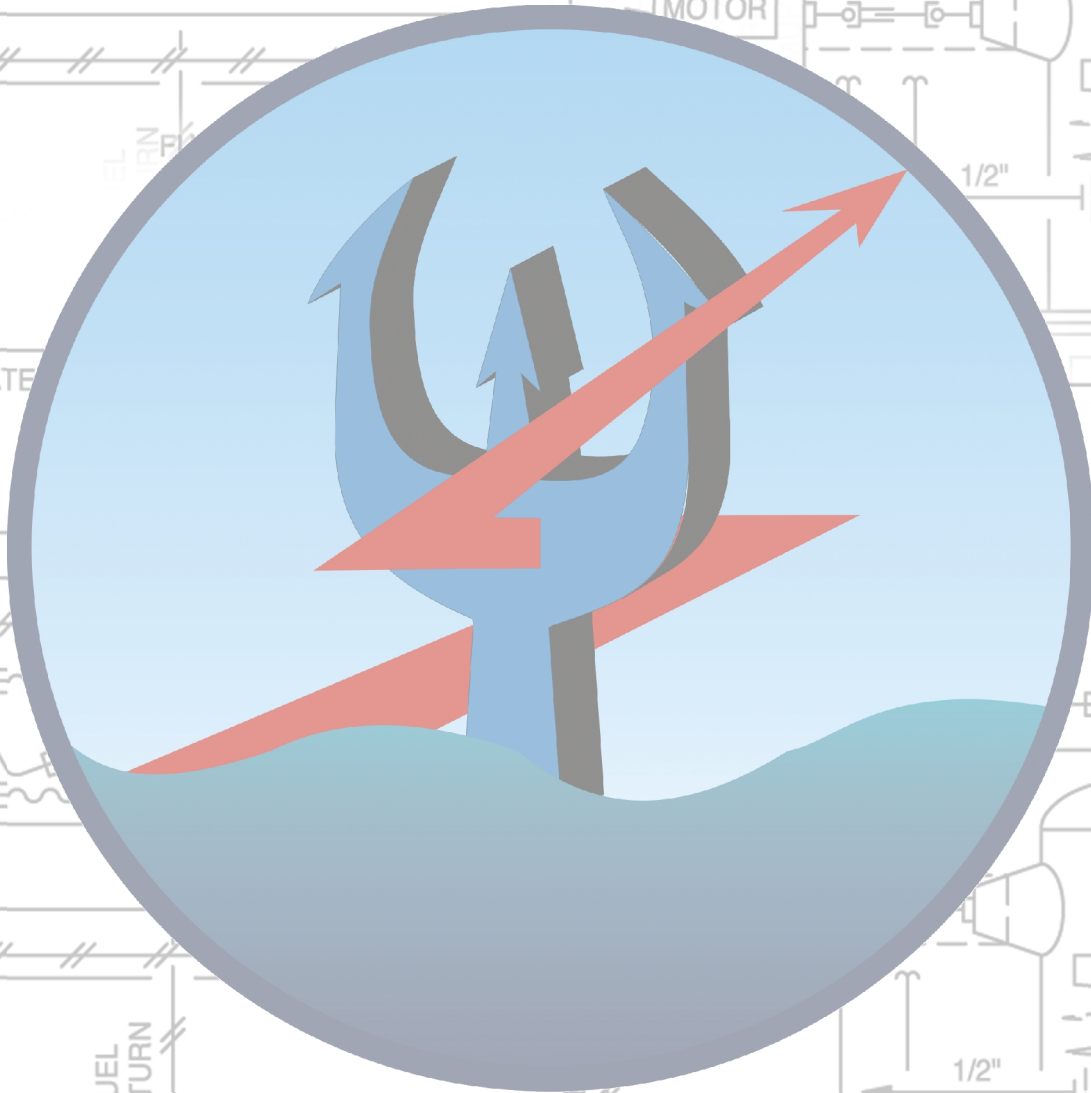
Model	Flow (m ³ /h)										Max. Motor power (HP)	Max jockey motor power (HP)	Expansion vessel (lt)	Collector diameter suction/delivery (mm)	Min.outlet dimensions LxWxH (mm)		
	60	70	80	90	100	110	120	130	140	150						160	170
	Total head (m)																
EEJ 65-160 (Φ139)	25	24	23	21	19	17	14	-	-	-	-	-	200	125/100	1700*1390*1500		
EEJ 65-160 (Φ157)	33	32	31	30	28	26	24	21	18	-	-	-	200	125/100	1700*1510*1500		
EEJ 65-160 (Φ170)	41	40	39	38	36	35	33	30	28	25	-	-	300	125/100	1700*1510*1500		
EEJ 65-160 (Φ174)	43	42	41	40	39	37	36	34	31	28	26	-	300	125/100	1750*1510*1500		
EEJ 65-200 (Φ179)	45	44	42	40	38	35	32	28	-	-	-	-	300	125/100	1750*1510*1500		
EEJ 65-200 (Φ193)	54	53	52	50	47	45	42	38	34	29	-	-	300	125/100	1770*1610*1500		
EEJ 65-200 (Φ208)	63	62	61	60	58	56	54	52	48	45	40	36	500	125/100	1860*1710*1500		
EEJ 65-200 (Φ218)	70	69	68	66	65	64	61	59	56	53	49	44	500	125/100	1860*1710*1600		
EEJ 65-250 (Φ204)	54	52	50	46	42	36	-	-	-	-	-	-	500	125/100	1880*1610*1600		
EEJ 65-250 (Φ220)	65	64	62	58	56	52	48	40	-	-	-	-	500	125/100	1970*1710*1600		
EEJ 65-250 (Φ236)	78	76	75	72	70	66	62	57	51	43	-	-	500	125/100	1970*1710*1600		
EEJ 65-250 (Φ252)	90	89	88	86	83	80	76	72	68	63	55	47	500	125/100	2030*1800*1600		
EEJ 65-250 (Φ268)	104	102	101	100	98	96	92	90	86	80	75	68	500	125/100	2050*1760*1600		

FIRE FIGHTING BOOSTING SETS, 80 SERIES ELECTRIC DRIVEN PUMP (TWO UNITS)- JOCKEY PUMP

Τύπος	Παροχή σε (m ³ /h)												Max. Ισχύς H/K σε (HP)	Max. Ισχύς jockey σε (HP)	Πεστικό δοχείο σε (lt)	Διάμετρος συλλεκτών Ανφρ./καταθλ σε (mm)	Min. Εξωτ. Διαστάσεις MxΠxΥ σε (mm)	
	Μανομετρικό σε (m) Σ.Υ.																	
	60	80	100	120	140	160	180	200	220	240	260	280						300
EEJ 80-160 (Φ138)	18	17	15	13	10	-	-	-	-	-	-	-	-	10	1	200	150/125	1620*1370*1600
EEJ 80-160 (Φ144)	25	24	22	20	17	13	-	-	-	-	-	-	-	15	1	200	150/125	1730*1490*1600
EEJ 80-160 (Φ162)	-	31	29	28	25	23	19	-	-	-	-	-	-	20	2	300	150/125	1730*1510*1600
EEJ 80-160 (Φ169)	-	36	35	34	32	29	26	21	-	-	-	-	-	25	2	300	150/125	1790*1510*1600
EEJ 80-160 (Φ174)	-	39	38	37	36	34	31	27	20	-	-	-	-	30	2	300	150/125	1790*1610*1600
EEJ 80-200 (Φ183)	-	-	46	45	44	42	39	36	31	-	-	-	-	40	2	500	150/125	2000*1690*1600
EEJ 80-200 (Φ197)	-	-	55	54	53	51	49	46	42	35	-	-	-	50	3	500	150/125	2000*1710*1700
EEJ 80-200 (Φ207)	-	-	62	61	60	58	56	54	51	46	39	-	-	60	3	500	150/125	2060*1800*1700
EEJ 80-200 (Φ218)	-	-	-	68	67	66	64	63	59	54	48	-	-	75	3	500	150/125	2140*1900*1700
EEJ 80-200 (Φ218)	-	-	-	64	61	58	56	50	44	32	-	-	-	60	3	500	150/125	2060*1800*1700
EEJ 80-250 (Φ229)	-	-	-	71	69	67	64	60	56	51	41	-	-	75	3	500	150/125	2140*1900*1700
EEJ 80-250 (Φ250)	-	-	-	88	87	86	83	80	76	72	66	58	50	100	4	500	150/125	2220*2060*1800
EEJ 80-250 (Φ268)	-	-	-	102	100	99	98	95	92	88	84	76	70	125	4	500	150/125	2270*2060*1800

FIRE FIGHTING BOOSTING SETS, 100 SERIES ELECTRIC DRIVEN PUMP (TWO UNITS)- JOCKEY PUMP

Τύπος	Παροχή σε (m ³ /h)												Max. Ισχύς H/K σε (HP)	Max. Ισχύς jockey σε (HP)	Πεστικό δοχείο σε (lt)	Διάμετρος συλλεκτών Ανφρ./καταθλ σε (mm)	Min. Εξωτ. Διαστάσεις MxΠxΥ σε (mm)	
	Μανομετρικό σε (m) Σ.Υ.																	
	140	160	180	200	220	240	260	280	300	320	340	360						380
EEJ 100-200 (Φ178)	41	39	38	36	34	32	30	27	-	-	-	-	-	40	2	500	200/150	2000*1670*1600
EEJ 100-200 (Φ190)	48	47	46	44	42	40	38	35	33	29	-	-	-	50	2	500	200/150	2000*1690*1700
EEJ 100-200 (Φ198)	-	52	51	50	48	46	44	42	39	36	33	30	-	60	2	500	200/150	2060*1780*1700
EEJ 100-200 (Φ209)	-	59	58	57	56	54	52	51	48	46	43	39	34	75	3	500	200/150	2140*1760*1800
EEJ 100-200 (Φ218)	-	65	64	63	62	61	59	58	56	54	51	48	44	100	3	500	200/150	2220*2060*1800
EEJ 100-250 (Φ213)	-	59	57	56	55	53	51	50	47	44	41	38	34	75	3	500	200/150	2150*1760*1800
EEJ 100-250 (Φ232)	-	-	68	67	66	65	63	62	61	58	56	53	50	100	3	500	200/150	2230*2060*1900
EEJ 100-250 (Φ250)	-	-	81	80	79	78	77	76	75	73	71	68	66	125	4	500	200/150	2270*2060*1900



S. AIVAZIDIS S.A.

www.aivazidis.gr



Branch office

Papanastasiou Str.130, 10445
K. Patisia, Athens, Greece
Tel.: +30 210 2116378
Fax: +30 210 2116379
athens@aivazidis.gr

Headquarter

Zappa Str., Oreokastro,
57013 Thessaloniki, Greece
Tel.: +30 2310 694000
Fax: +30 2310 692110
info@aivazidis.gr